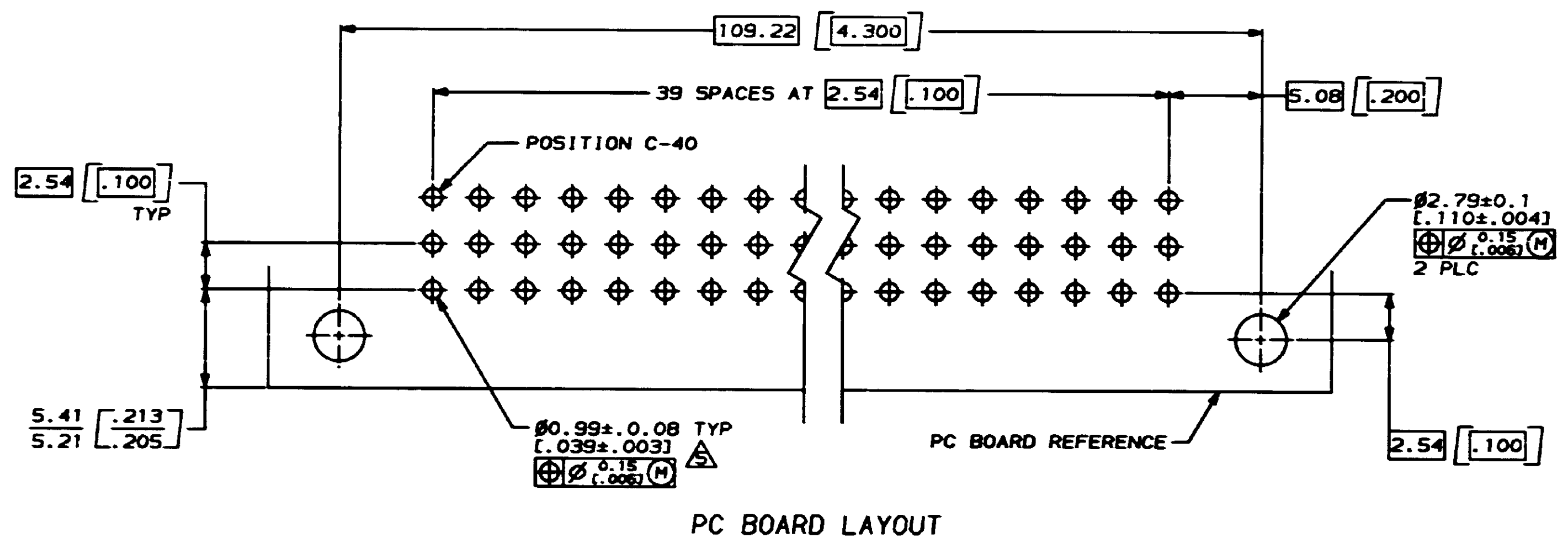
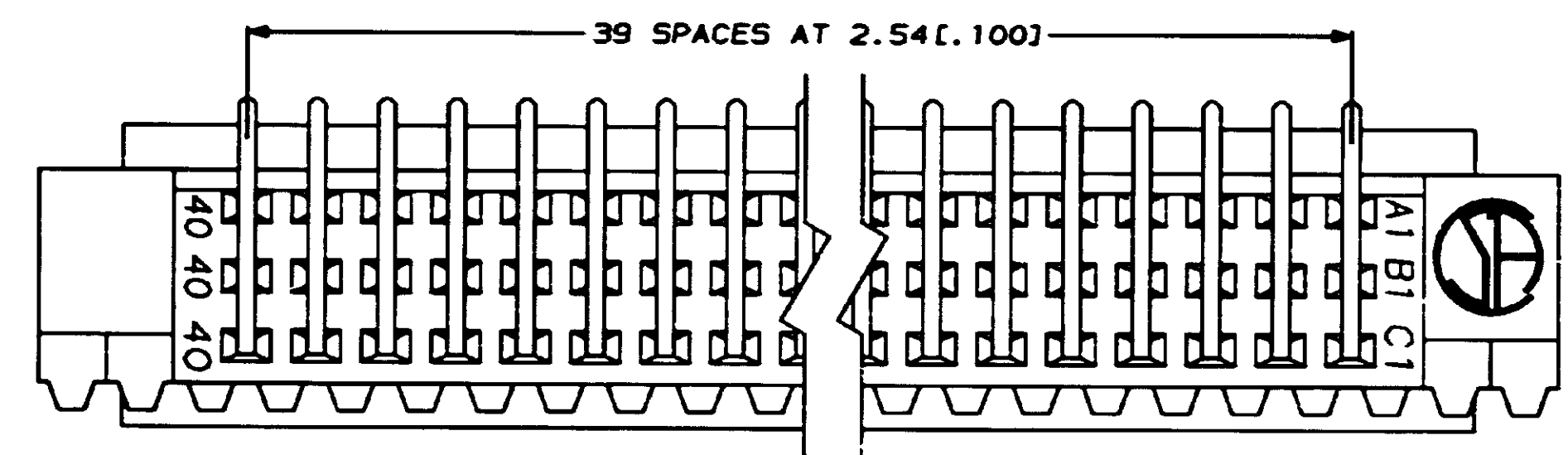
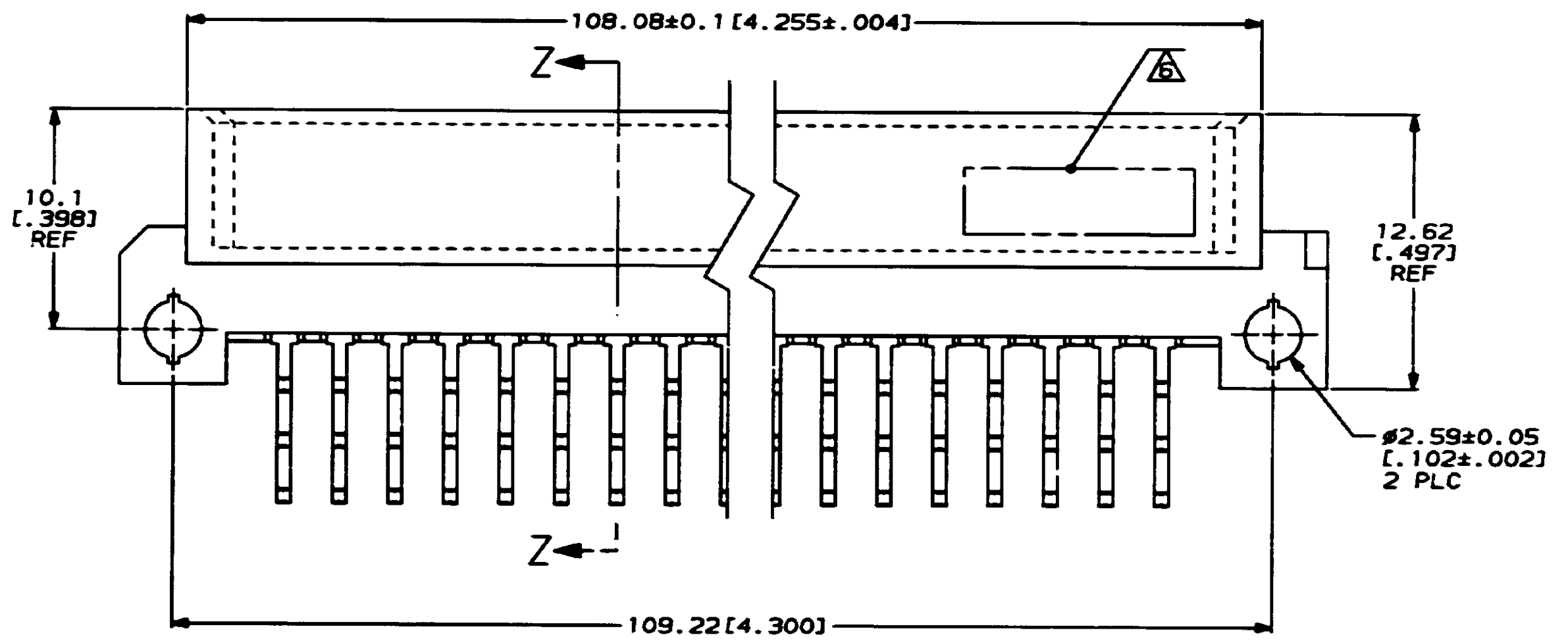
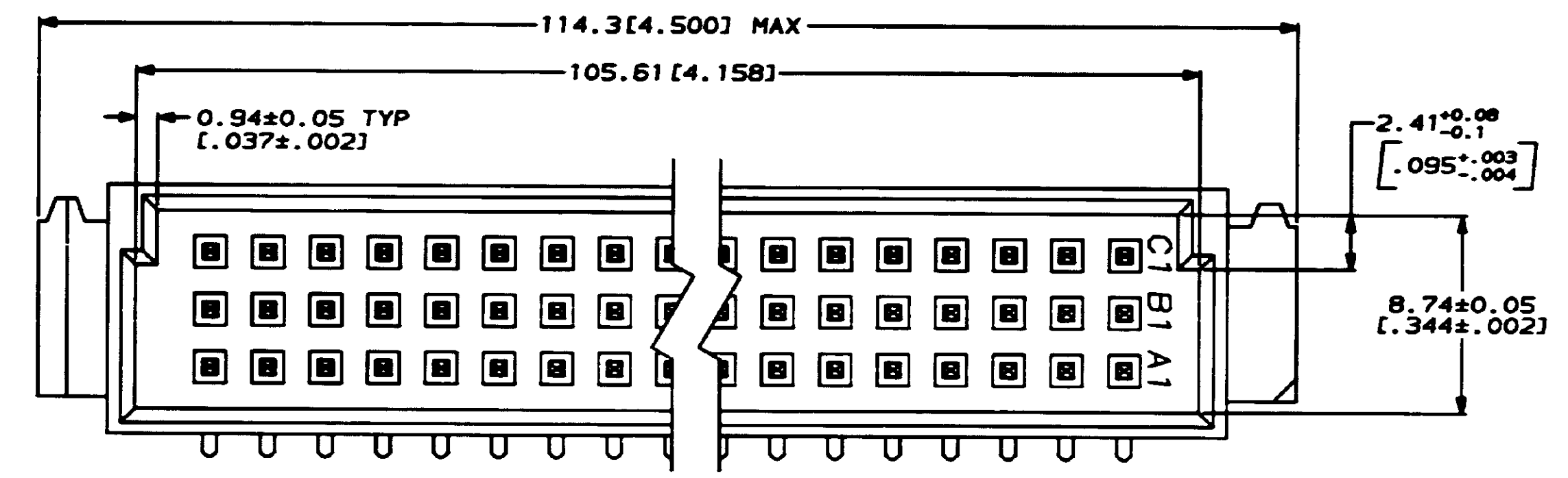
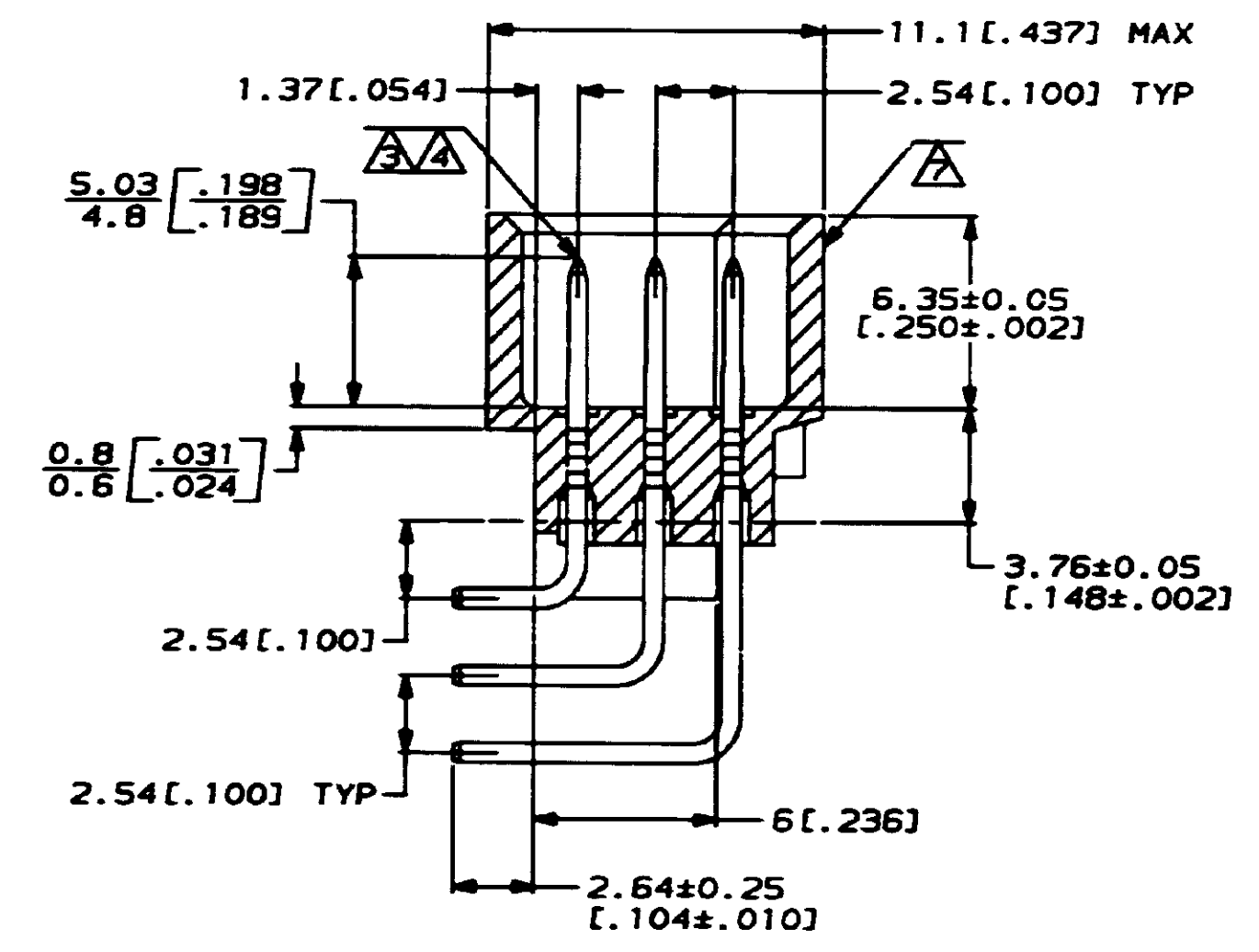


THIS DRAWING IS UNPUBLISHED. RELEASED FOR PUBLICATION BY AMP INCORPORATED. ALL INFORMATIONAL RIGHTS RESERVED.

REV. NO.		DATE	DESCRIPTION	DATE	APPD.
0	AD	25	0 DRAWN	-	-
A			ECN AD5588	3/22/91	LSB
B			ECN AD5640	6/16/91	LSB
C			ECN AD5876	11/14/91	LSB
D			ECN AD6252	3/21/92	LSB
E			EC 0010-1559-93	11/8/93	LSB
F			EC 0010-0404-94	3/29/94	LSB
G			EC 0010-0436-94	3/25/94	LSB



- △ HOUSING MATERIAL: GLASS-FILLED POLYESTER. COLOR: GRAY.
- △ POST MATERIAL: BRASS.
- △ POST FINISH: DIN 41612 CLASS 3 IN CONTACT AREA. TIN-LEAD PLATE ON POSTS.
- △ POST FINISH: DIN 41612 CLASS 2 IN CONTACT AREA. TIN-LEAD PLATE ON POSTS.
- △ RECOMMENDED HOLE SIZE FOR MANUAL APPLICATION OF CONNECTOR ONTO PC BOARD.
- △ [PART NUMBER, DATE CODE] MARKED THIS APPROXIMATE AREA.
- △ MARKING ON THIS SIDE.



SECTION Z-Z

NOTES	POSITIONS LOADED	ROWS LOADED			NO. OF LOADED POSITION	ASSY PART NUMBER
		C	B	A		
SUPERSEDED BY 650906-5						
	1-40	X	X	X	120	650906-9
	1-40	X	X	X	120	650906-5

DO NOT SCALE PRINT. UNLESS SPECIFIED DIMENSIONS IN mm [INCHES]		DR. L. BRINER 2/13/91		PART NO.	
TOLERANCES ON:		CHK. D.C. RUBENDALL 3/22/91		AMP AMP Incorporated Harrisburg, PA 17105-3608	
1 PLC DEC ±		APPD. D.C. RUBENDALL 3/22/91		NAME	
2 PLC DEC ± 0.131 (0.005)		APPD. D.C. RUBENDALL 5/26/92		PIN ASSEMBLY, EUROCARD, TYPE "C"	
ANGLES ±				PRODUCT SPEC	
MATERIAL				APPLICATION SPEC	
HOUSING: △				SIZE	CAGE CODE
POST: △				D	00779
FINISH				DRAWING NO.	650906
POST: △△				SCALE	5:1
				SHEET	1 OF 1

CUSTOMER DRAWING